

Foundry Lane Primary School
Foundry Lane, Shirley, Southampton SO15 3JT
Telephone: 023 80774814 E mail info@foundrylanepriamary.co.uk
School Website - www.foundrylanepriamary.co.uk

Year R Weekly
Information Sheet
10/9/2021



Welcome to Year R!

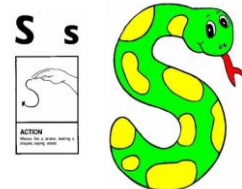
It has been lovely getting to know the children and their families during the meet the teacher appointments. We have had a lovely few days with the children and they have begun to really settle well. The children have all had a great time seeing familiar faces, making new friends and getting used to the routines in school. Different children take different amounts of times to settle, and a few tears are always expected. Thank you for your support in letting your children come into the classroom independently. They have been superstars! Don't forget if you want to contact your child's class teacher you can use the yearR@foundrylanepriamary.co.uk email.

THIS WEEK WE HAVE LEARNT: Everyday the children have settled into their morning routines including washing their hands, putting away their things in their tray and choosing their own activities. This week we have given children lots of opportunities to explore the classroom and the outdoor space through our discovery time. Children have been building train tracks, playing in the water outside, acting out stories and making lots of cups of tea in the role play area!






PHONICS: Phonics is where the children learn about the sounds different letters make. These sounds are what words are made of and once children have learnt the sounds they can begin to read words by blending the sounds together. This week we have learnt our first new sound **s**, next week we will be learning a new sound each day. The reason we learn the sounds in a particular order is because of their frequency in sounds words.

Each Friday your child will bring home the sheets linked to the sounds they have learnt that week. **PLEASE** get your children to practice the sounds they have learnt. You can use these sheets to create a sounds book at home!



NUMBER RHYMES: In Maths this week we have been singing lots of different number rhymes. Children have been using resources to act out the rhymes and practice their counting skills. Each class has learnt a different rhyme a day so by the end of next week they will know all of these rhymes confidently.

<p>5 little ducks</p> 	<p>1,2,3,4,5 Once I caught a fish alive</p> 	<p>5 speckled frogs</p> 
---	---	---

Why don't you get your child to sing the one they have been learning at home!

COLLECTION GATE: When collecting children at 11:45 please enter the school site via the Foundry Lane gate.

DROP OFF TIMES: As many parents who already have siblings are aware there is a staggered start time for school drop off. You can still drop off at 8:45 or follow the group drop off times below.

Red group – 8:40 Green group – 8:45 Blue group – 8:50 Yellow group – 8:55

HOMEWORK BAGS: It is essential that your child has a bag in school every day, we will start sending home reading books next week which children will need to bring into school each day. The bag can be a Foundry Lane book bag or one from home but must be the size of a book bag so it can fit in your child's tray. **Please remember to name them!**



WOW MOMENTS: This week we are launching WOW Moments. This is where children can share their achievements from by filling on a little slip and bringing it in. If the children are helpful, kind or try really hard with a job we would love to be able to share these with the class and put them on our WOW board. Please see the attached sheet which can be cut up and shared. There are lots of blank ones in the classroom so please always ask if you need new ones.

WATER BOTTLES: We encourage children to bring in water bottles to have during their time in school. In their bottles must only be water. We ask that **NO CITRUS** drinks are put in these bottles due to severe allergies, this will also be the same for fruit once children start having lunch in school.



PE: Children will not need to wear their PE kits until Monday 27th September when the children are full time. They need to come in dressed in their kit and will wear it all day. Children should be wearing plain black shorts/jogging bottoms/leggings, their colour group t-shirt, school jumper/cardigan and black trainers or school shoes.

BELONGINGS: Please ensure that all of your children's belongings (coats, jumpers/cardigans, water bottles etc) are clearly named.

KEY DATES:

13th – 17th Children mornings only 8:45 until 11:45

20th – 24th Children mornings but stay for lunch 8:45 until 12:45

Monday 20th September – Red group stay all day pick up 3pm

Tuesday 21st September – Yellow group stay all day pick up 3pm

Wednesday 22nd September – Green group stay all day pick up 3pm

Thursday 23rd September – Blue group stay all day pick up 3pm

Monday 27th September – full time 3:10pm pick up. Children to wear PE kit this day.

Monday 18th October – INSET day – school closed